

CASE STUDY



Client: Top Secret

Location: Brixton Design Trail, Brixton SW9

The Background

As part of the Brixton Design Trail, Eley Kishimoto has designed four colourful flash crossings to replace the existing crossings outside the Dogstar at the junction of Atlantic, Railton and Coldharbour.

Continuing their tradition of patterning the streets of Brixton during the London Design Festival, Eley Kishimoto with Dolman Bowles will focus on a prominent local junction in the heart of the community, funded by Brixton BID.

The location has significance locally with a history marked by trading, transport, riots and landmark pubs, and is now at the centre of Brixton's resurgence as a cultural hotspot. The crossing has a high volume of cars, cyclists and pedestrians and can be a precarious place to navigate.

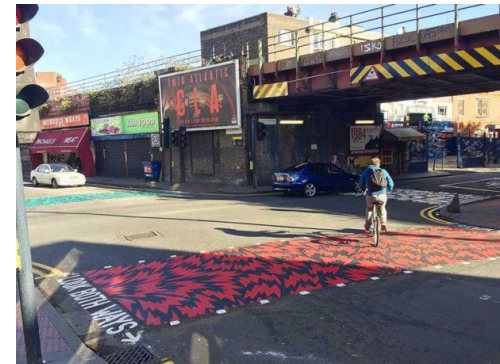
The Trials

Working closely with the manufacturers, THB were involved in material trials to deliver a visual spectacle that is both very noticeable and incorporates skid resistance materials. THB installed these crossings over two nights to minimise the impact on local traffic.

The Solution

The team has delivered four stunning crossings that:

- Made the BBC News – view it here https://www.youtube.com/watch?v=Z4nqjLr_uk&feature=youtu.be
- Greatly enhance the environment
- Has become a serious talking point
- Enhances road safety due to its high visibility



Trust  to innovate a solution for you.